



PHOTO OF DRIVE SIDE OF THE ENGINE



PHOTO OF OPPOSITE SIDE OF THE ENGINE

TECHNICAL INFORMATION

A

CHARACTERISTICS

		Tolleranze
Volume of cylinder	60cc	
Max. Bore	42,1mm	
Stroke	43mm	± 0,10 mm.
Induction system	Piston Port	

SBF Stämpel/signatur

	HOMOLOGERINGSBLAD KARTING	<b>KA-H14:001</b>  2 2/21 160101 / 201231
	TM Racing 60cc - Junior 60	
	Utgåva	
	Sida	
	Publiceringsdatum / Giltig t.o.m.	

Cooling system	Air flow	
Mini Kart Carburettor	D. 18,00mm., bowl type, not electronic, with national homologation currently valid	
Number of transfer ducts, cylinder/sump	2	
Exhaust port width	28mm Jig supplied by manufacturer	+ 0,1mm - 0.2 mm
Inlet port width	26mm Jig supplied by manufacturer	+ 0,1mm - 0,2mm
Piston weight (with ring without gudgeon pin)	59,7gr	± 10% del peso totale
Crankshaft weight complete of conrod, without piston	1228gr	± 3% del peso totale
Gudgeon pin	16gr	± 10% del peso totale
Conrod	88 mm	± 0,1mm
Volume of combustion chamber	6,8cc min., verifiable with an insert (as per procedure)	
Clutch: Single drawing same for all. Starting gear admitted also in anti-magnetic material, exotic and noble materials are not admitted	Total weight: 800g min.  Inside diameter of the clutch basket: 85.00mm max	
Shape of the combustion chamber	Clutch dimensions single drawing same for all Verification with jig supplied by manufacturer to verify Shape and SQUISH Band	
Chain sprocket	10T 11T	
Cylinder base	Jig (min. and max.)	± 2mm
IGNITION	SELETTRA mod. "LC 23915" homologation n° – 01/ACZ/14	

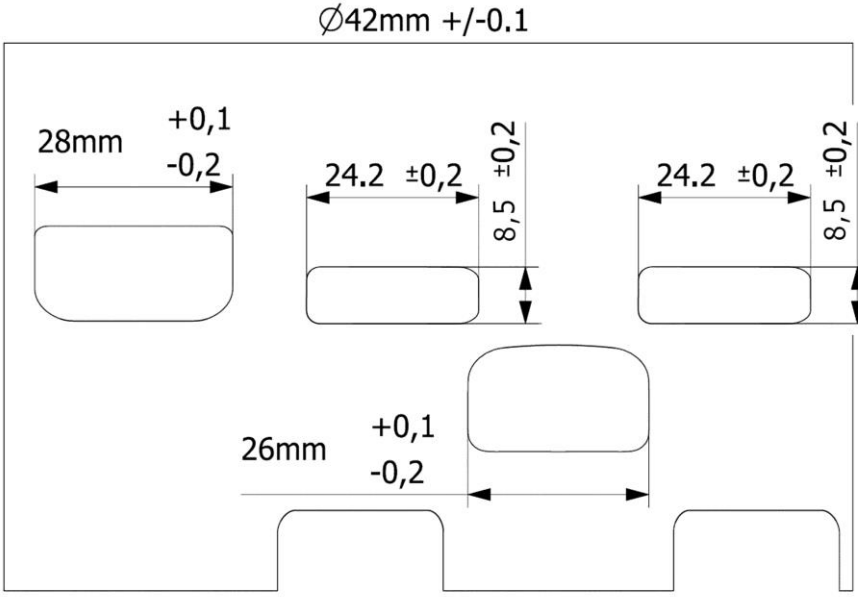
B	PORT TIMING (measured with feeler gauge mm. 0.20 thickness and mm. 5 width)	
	Inlet angle	144°
Exhaust angle	156°	Max
Transfer angle	115.5°	± 2°

SBF Stämpel/signatur  

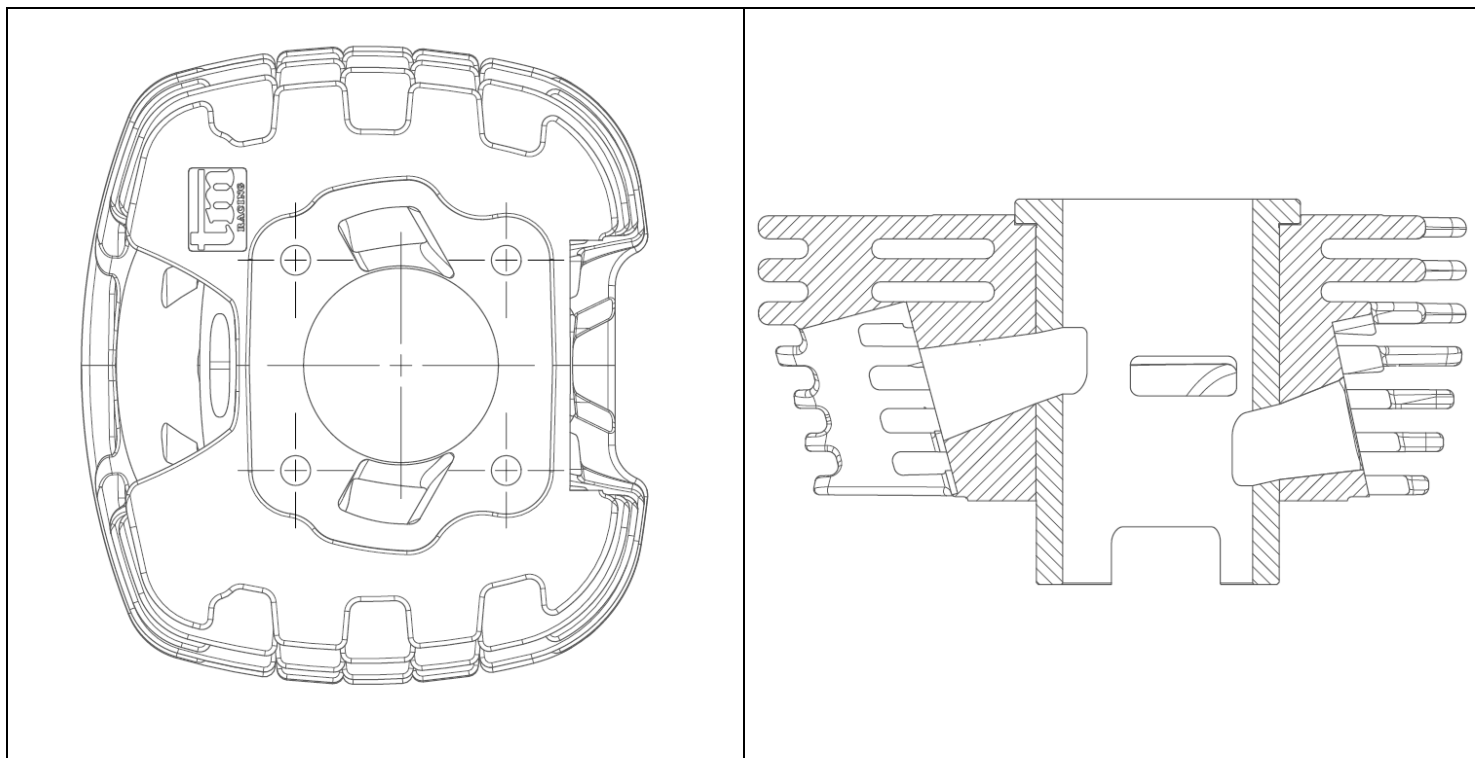


	HOMOLOGERINGSBLAD KARTING	<b>KA-H14:001</b>  2 3/21 160101 / 201231
	TM Racing 60cc - Junior 60	
	Utgåva	
	Sida	
	Publiceringsdatum / Giltig t.o.m.	

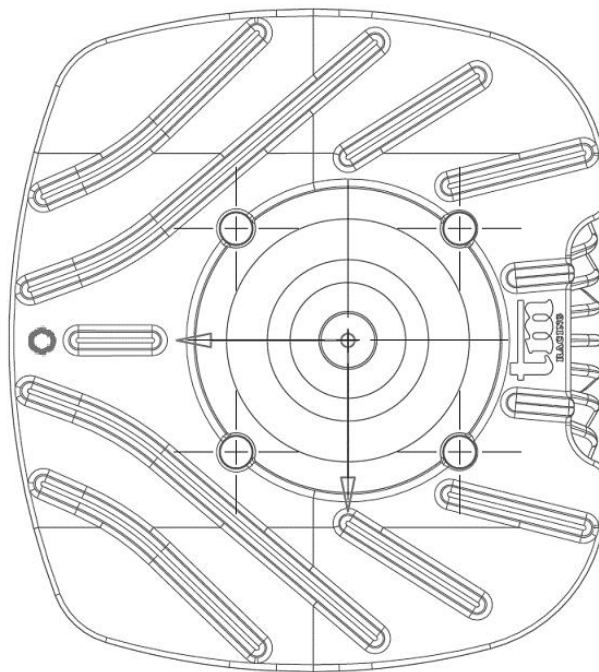
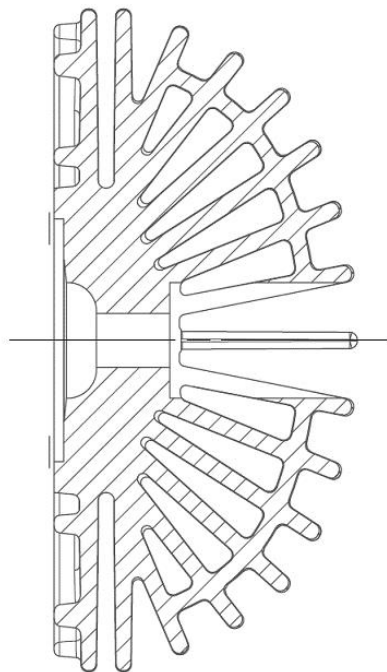
<b>C</b>	<b>MATERIALS</b>
<b>CYLINDER:</b> Aluminium alloy, with iron liner inside, chrome plating, nikasil and treatments with exotic materials are not admitted.	

<b>DRAWING OF THE CYLINDER DEVELOPMENT</b>	
	
Disegno dello sviluppo del cilindro con misure cordali delle luci	
<b>DRAWING OF THE CYLINDER BASE</b>	<b>SECTION OF THE CYLINDER BASE</b>

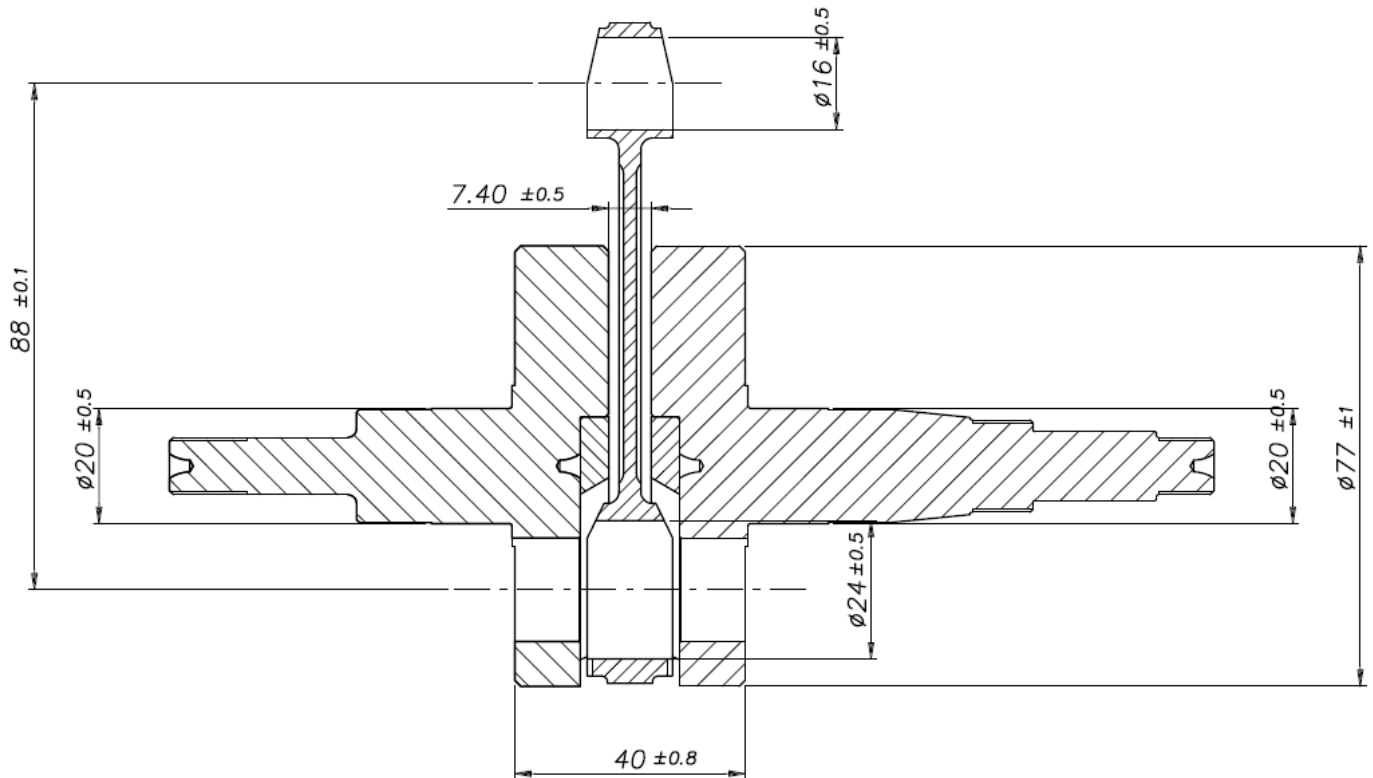
SBF Stempel/signatur  
 *Stefan Andersson*



**DRAWING OF THE CYLINDER HEAD AND COMBUSTION CHAMBER**



**DRAWING AND DIMENSIONS OF THE CRANKSHAFT (mount of ignition rotor Ø 10mm)**



SEZ. A-A

	HOMOLOGERINGSBLAD KARTING	KA-H14:001
	TM Racing 60cc - Junior 60	
	Utgåva	2
	Sida	7/21
	Publiceringsdatum / Giltig t.o.m.	160101 / 201231

**Photos of disassembled crankshaft, showing masses (plates) for balancement in PLASTIC material !!**



SBF Stämpel/signatur  
 *Sören Andersson*



	HOMOLOGERINGSBLAD KARTING	<b>KA-H14:001</b>  2 8/21 160101 / 201231
	TM Racing 60cc - Junior 60	
	Utgåva	
	Sida	
	Publiceringsdatum / Giltig t.o.m.	

**PHOTO OF THE CONROD LEFT SIDE**

**PHOTO OF THE CONROD RIGHT SIDE**



SBF Stämpel/signatur  

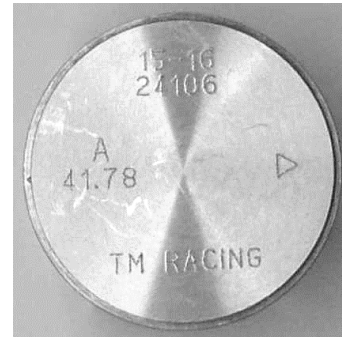
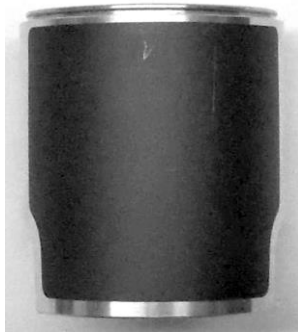
*Ståmpel*



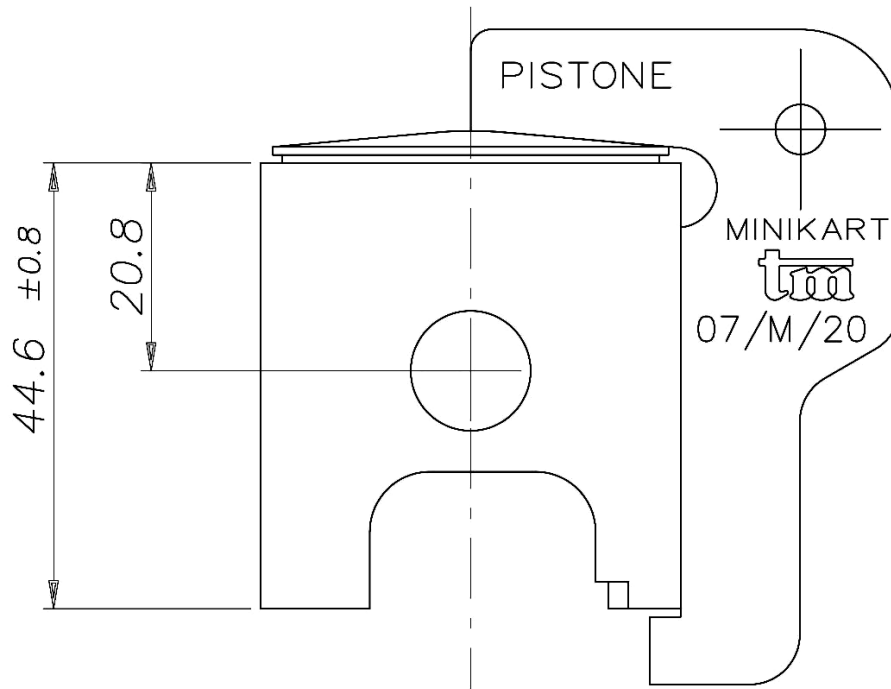
	HOMOLOGERINGSBLAD KARTING	KA-H14:001
	TM Racing 60cc - Junior 60	
	Utgåva	2
	Sida	9/21
	Publiceringsdatum / Giltig t.o.m.	160101 / 201231

### PHOTOS OF THE PISTON

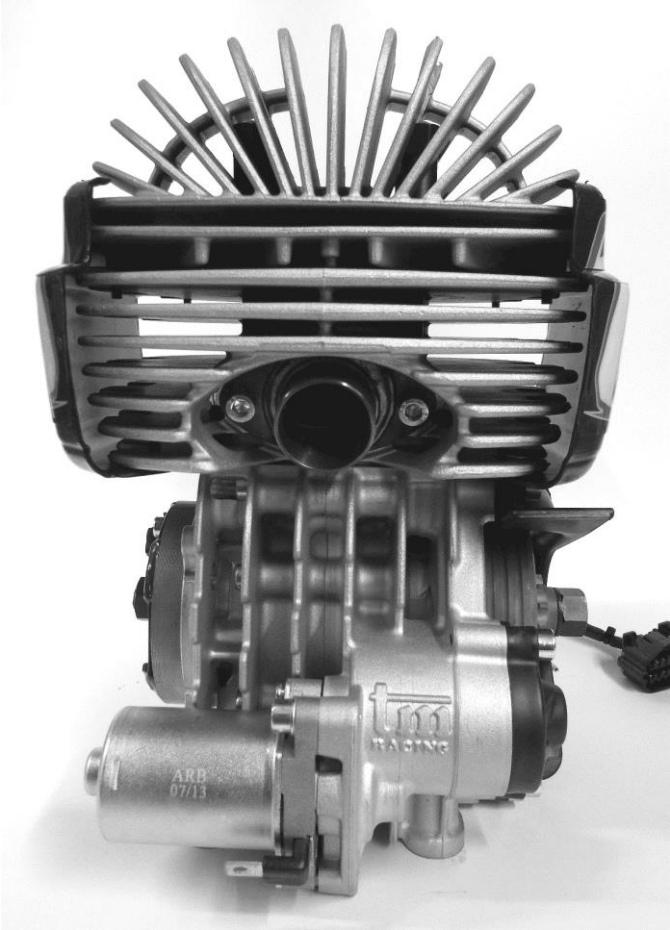

Side view, gudgeon pin side view, above view and inside view



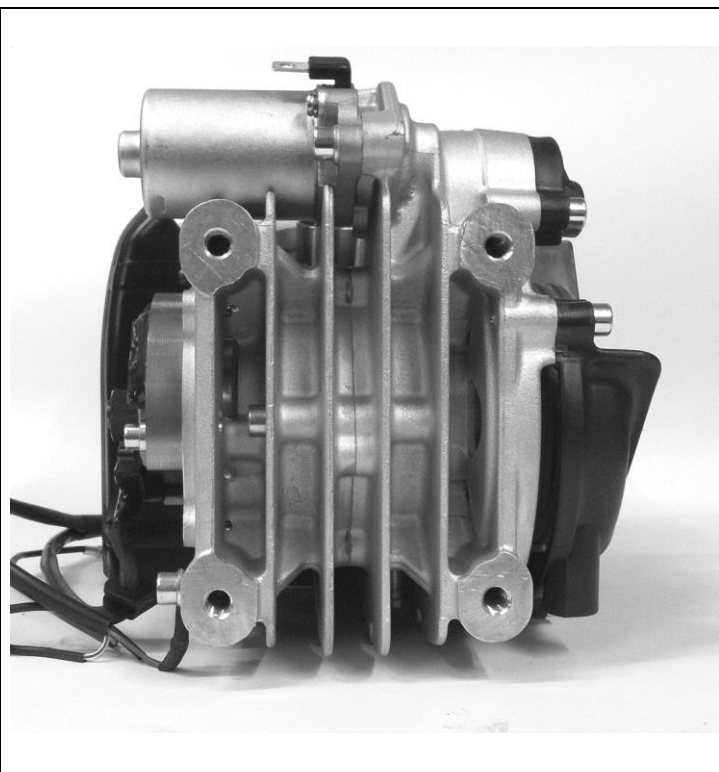
**Dimensions and jig supplied by manufacturer**





	HOMOLOGERINGSBLAD KARTING	<b>KA-H14:001</b>  2 11/21 160101 / 201231
	TM Racing 60cc - Junior 60	
	Utgåva	
	Sida	
	Publiceringsdatum / Giltig t.o.m.	

<b>PHOTO OF THE REAR OF THE ENGINE</b>	<b>PHOTO OF THE FRONT OF THE ENGINE</b>
	
<b>PHOTO OF THE ENGINE TAKEN FROM ABOVE</b>	<b>PHOTO OF THE ENGINE TAKEN FROM BELOW</b>

SBF Stämpel/signatur  
 *Stefan Andersson*

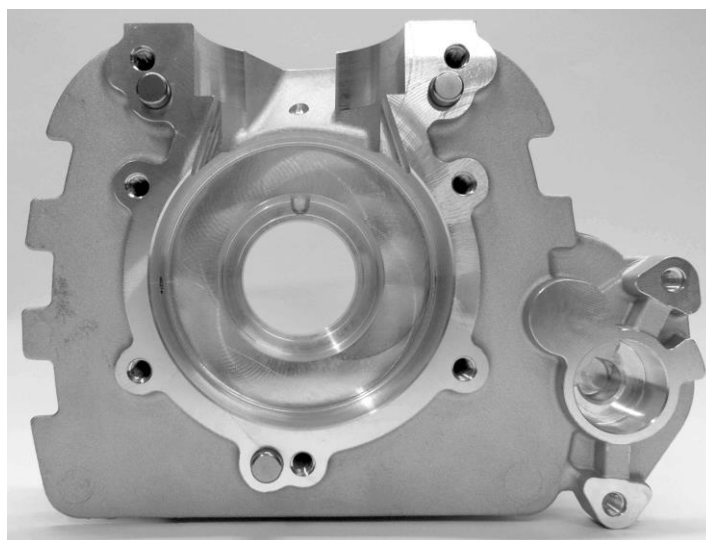


	HOMOLOGERINGSBLAD KARTING	<b>KA-H14:001</b>  2 13/21 160101 / 201231
	TM Racing 60cc - Junior 60	
	Utgåva	
	Sida	
	Publiceringsdatum / Giltig t.o.m.	

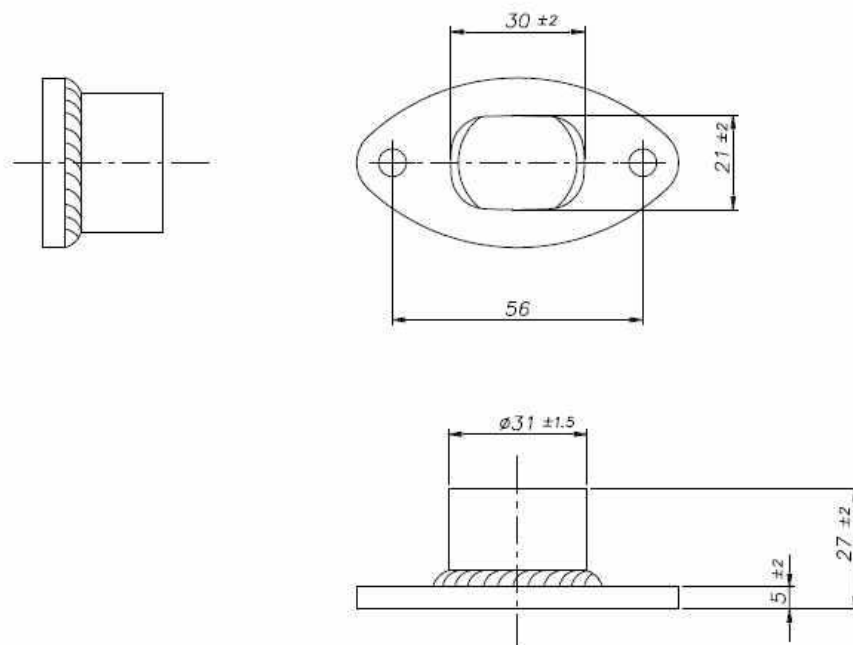
<p align="center"><b>PHOTO OF THE CYLINDER BASE</b></p>	<p align="center"><b>PHOTO OF THE COMBUSTION CHAMBER</b></p>
	
<p align="center"><b>PHOTO OF THE INSIDE OF THE LH CRANKCASE</b></p>	<p align="center"><b>PHOTO OF THE INSIDE OF THE RH CRANKCASE</b></p>

SBF Stämpel/signatur  
 *Stefan Andersson*





DRAWING AND DIMENSIONS OF THE EXHAUST MANIFOLD

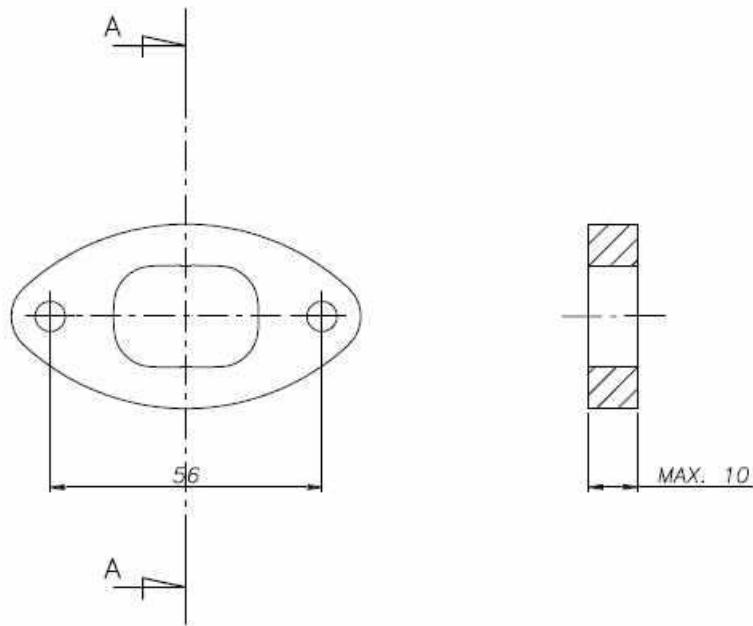




	HOMOLOGERINGSBLAD KARTING	KA-H14:001
	TM Racing 60cc - Junior 60	
	Utgåva	2
	Sida	16/21
	Publiceringsdatum / Giltig t.o.m.	160101 / 201231

**DRAWING AND DIMENSIONS OF THE FLANGE BETWEEN EXHAUST MANIFOLD AND CYLINDER**

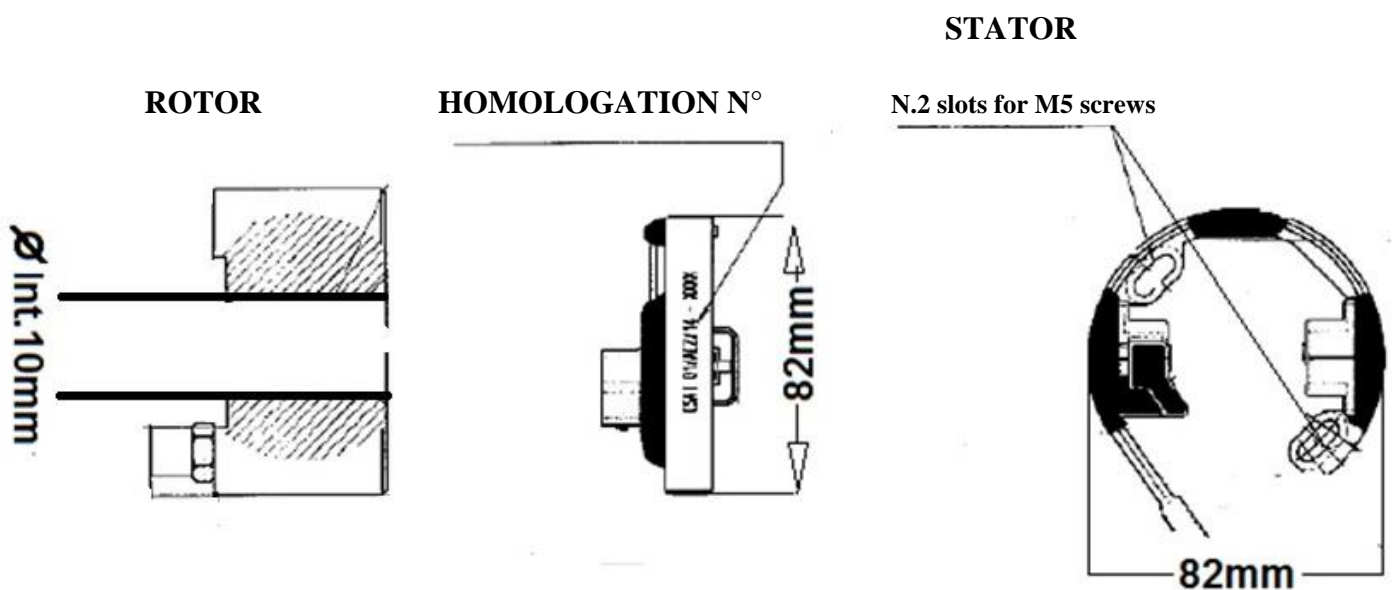
**OPTIONAL Thickness 10mm. max.  
Material: Aluminium, Steel (magnetic)**



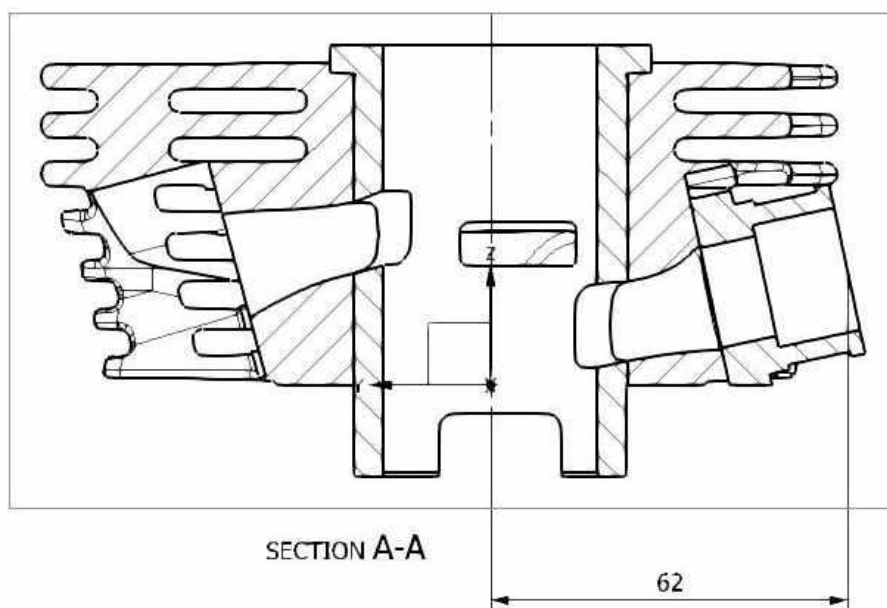
SBF Stämpel/signatur  
 *Stefan Andersson*

DIMENSIONS OF IGNITION

Fig. 6 – Dimensions of the stator and rotor of ignition, same for all



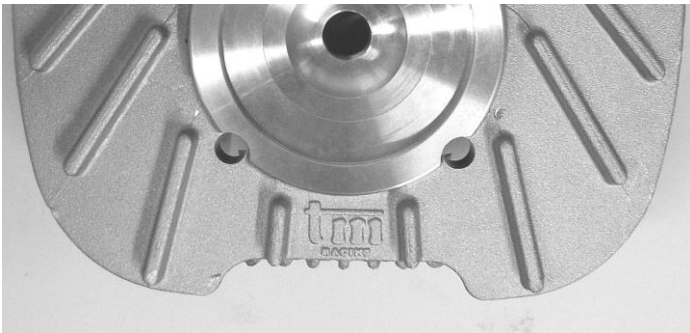
**MIN. DISTANCE OF CARBURETTOR FACE FROM CYLINDER AXIS**



	HOMOLOGERINGSBLAD KARTING	KA-H14:001
	TM Racing 60cc - Junior 60	
	Utgåva	2
	Sida	19/21
	Publiceringsdatum / Giltig t.o.m.	160101 / 201231

**Photos showing the marking of the 7 Details:**

**Cylinder head**



**Cylinder**



**Cylinder liner**



**Conrod**



SBF Stämpel/signatur  
 *Stefan Andersson*

	HOMOLOGERINGSBLAD KARTING	<b>KA-H14:001</b>  2 20/21 160101 / 201231
	TM Racing 60cc - Junior 60	
	Utgåva	
	Sida	
	Publiceringsdatum / Giltig t.o.m.	

### Crankshaft



### Piston



### Crankcase RH



### Crankcase LH



SBF Stämpel/signatur  
 *Stefan Andersson*

**OPTIONALS**

